

# GÜLCE

## GÜLCE GUESTHOUSE SUSTAINABILITY REPORT

### ABOUT THE HOTEL

We serve our guests with 18 rooms in total, including 2 deluxe rooms with sofas, 2 spacious family rooms with four beds, and 1 accessible room designed for guests with disabilities.

Our facility offers an open buffet breakfast service.

Each room is equipped with bath towels, hand towels, foot towels, and disposable slippers.

Shampoo, shower gel, and soap are provided as complimentary amenities.

Tea, coffee, water, and an electric kettle are available in every room.

Central digital air-conditioning is used for heating.

A mini-bar is also available in all rooms.

---

### 1. INTRODUCTION

At Gülce Guesthouse, we place sustainability principles at the heart of our operations.

Located in İnegöl, Bursa, our guesthouse prioritizes guest satisfaction and an eco-friendly hospitality approach through environmentally conscious management practices.

---

## **2. ABOUT US**

Established in 2021, Gülce Guesthouse offers accommodation and open buffet breakfast services with a total capacity of 18 rooms and 34 beds. We source all our products from local and trusted brands, introducing our guests to regional flavors and sustainable local suppliers.

---

## **3. OUR ORGANIZATIONAL STRUCTURE**

**Owner: Fatih Şiren**

**Departments: Reception, Kitchen, Housekeeping, Procurement, Accounting, Technical**

**Sustainability Officer: Fatih Şiren**

**All our departments implement environmentally conscious practices, contributing to energy and water conservation.**

---

## **4. ENERGY MANAGEMENT**

- **All lighting systems have been converted to LED technology.**
  - **Motion sensor lighting is used in common areas.**
  - **Energy consumption is regularly monitored and monthly savings rates are analyzed.**
- 

## **5. WATER MANAGEMENT**

- **Low-flow faucet heads are installed in all rooms.**
  - **Guests are encouraged to conserve water through informational cards placed in rooms.**
  - **“Water is Life” themed awareness signs are displayed in common areas.**
- 

## **6. ENVIRONMENTAL & WASTE MANAGEMENT**

- **Our facility operates under the Zero Waste System.**
- **Separate recycling bins are available for organic, plastic, paper, and glass waste.**
- **Staff receive annual waste separation training.**
- **Waste is carefully sorted at the source according to its type and stored in designated areas before being delivered to authorized recycling companies within legal time limits.**
- **We comply with all environmental regulations and strive to minimize our ecological footprint.**
- **We prefer to purchase recyclable and eco-labeled products and promote reusing opportunities wherever possible.**
- **We measure and monitor our environmental performance regularly to improve our sustainability goals and outcomes.**

7153

Tanzim Tarihi: 25.10.2020

## AMBALAJ ATIĞI ALINDI BELGESİ

## AMBALAJ ATIĞI ÜRETİCİSİNE AİT BİLGİLER

Kuruluş / Firma Adı	GÜLCE FATİH SİREN CUMA MAH. 1. TABAKHANE SK. No. 12 B İNEGÖL / BURSA İNEGÖL V.D.T.C.K.No.: 23896481180
Telefon Numarası	
Teslim Eden / Ad Soyad / İmza	Ertuğrul Erden

## AMBALAJ ATIĞI TOPLAMA TESİSİNE AİT BİLGİLER

Firma Ad	İNBEL GERİ DÖNÜŞÜM ATIK DEĞERLENDİRME SANAYİ VE LİMİTED ŞİRKETİ
Adres	MESUDİYE MAH.ŞİBALİ YOLU SOKAK NO :27 FEN İŞLERİ EK HİZMET BİNASI
Telefon 0 224 715 10 10	Vergi Dairesi İnegöl / 4761289200

## TESLİM ALINAN ATIĞA AİT BİLGİLER

Atığın Türü	Karton		
Miktar	50 kg		
Teslim Alan	Ad Soyad / İmza	Araç Plakası	
	Hüseyin Tulum	76 Y 7748	



## **7. GREENHOUSE GAS (GHG) EMISSIONS POLICY**

**At Gülce Guesthouse, we aim to minimize the impact of our operations on the urban environment and natural ecosystems, contribute to the protection of local biodiversity, and offer our guests an environmentally conscious accommodation experience.**

**This policy covers greenhouse gas (GHG) emissions resulting from the guesthouse's energy use, heating systems, electricity consumption, waste management, supply chain, and daily operations.**

**Heating in Gülce Guesthouse is provided through air conditioning systems that operate with electric power, meaning there is no direct fossil fuel consumption. However, indirect GHG emissions may occur depending on the energy sources used in electricity production.**

**Our Key Commitments:**

- Energy Efficiency: Air conditioners are maintained and their filters cleaned regularly to keep energy consumption at the lowest possible level.**
- Equipment Selection: We prefer air-conditioning systems with high energy efficiency ratings (A++ or A+++).**
- Temperature Settings: Heating and cooling are optimized for energy savings — 22–24°C in winter and 24–26°C in summer.**
- Use of Renewable Energy: Where feasible, we aim to shift electricity consumption toward renewable energy sources.**
- Awareness & Training: Staff receive regular information and training on energy conservation and climate-friendly practices.**
- Waste Reduction: Recycling and waste separation practices help reduce indirect emissions.**
- Monitoring & Reporting: Electricity consumption is tracked regularly, and annual GHG emissions are calculated to set and improve reduction targets.**

**The policy is monitored by the Sustainability Officer and reviewed at least once a year.**

**The performance of air-conditioning systems is evaluated through energy consumption records, and the collected data is included in the annual sustainability performance reports.**

All employees are responsible for acting in accordance with the company's energy conservation and emission reduction goals.



## **7. PROCUREMENT POLICY**

**In line with our sustainable supply approach, Gülce Guesthouse expects its suppliers and business partners to act responsibly and in accordance with sustainability principles.**

**We give priority to suppliers and partners who:**

- Hold Quality Assurance, Environmental, and Occupational Health & Safety Management Systems certifications, as well as internationally recognized environmental and sustainability standards.**
- Ensure that their production and supply processes have no harmful impact on the environment and fully comply with environmental regulations.**
- Use natural resources responsibly, without harming biodiversity or local ecosystems, and respect hunting and wildlife protection laws.**
- Work actively to minimize waste and manage it properly, offering low-packaging or bulk packaging alternatives when possible.**
- Provide products and services that are eco-friendly, resource-efficient, locally sourced, and uphold ethical values.**
- Prefer materials that are recyclable or made from recycled content, and products that are organic, bio-based, vegan, cruelty-free, and free from harmful chemical ingredients.**
- Are local or domestic producers/service providers, supporting the regional economy.**
- Offer products and services that reflect and promote our country's and region's culinary traditions and cultural heritage.**

**We share this perspective with all our stakeholders and suppliers, striving together to identify efficient procurement opportunities and reduce the environmental impact of our purchasing processes.**



## **7. SOCIAL RESPONSIBILITY**

**Our guesthouse provides internship opportunities for vocational high school students, supporting education and youth development.**

**We also contribute to society through donations to LÖSEV (The Foundation for Children with Leukemia).**

**Additionally, by collaborating with local communities, we actively support the regional economy and promote sustainable local growth.**

---

## **8. LOCAL PRODUCTS AND CULTURAL SUSTAINABILITY**

**We source our breakfast products from local producers, ensuring freshness while supporting small-scale suppliers in the region.**

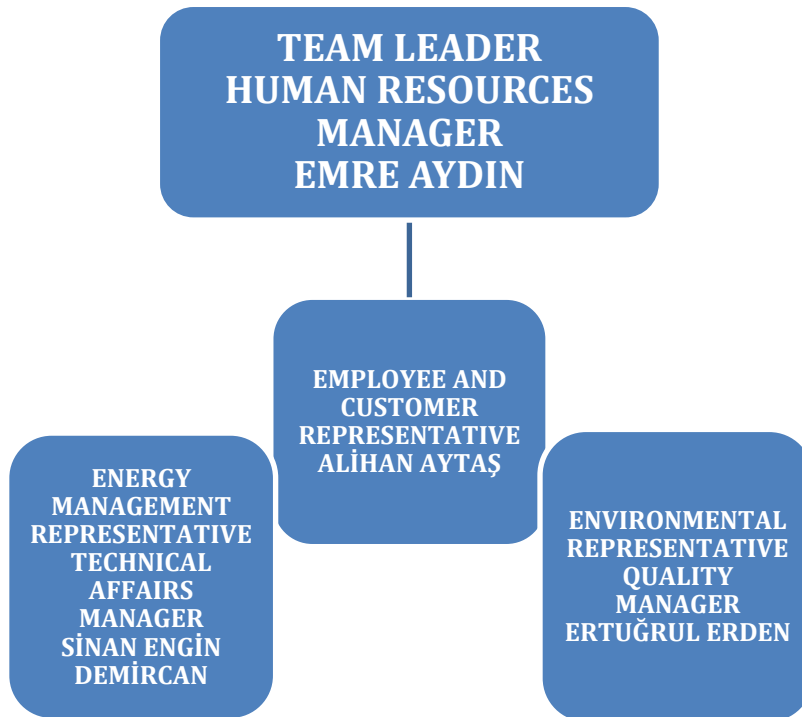
**We also provide informational materials introducing İnegöl's local culture and values to our guests, helping preserve and promote the area's cultural heritage.**

---

## **9. OUR FUTURE GOALS (2025–2026)**

- 1. Reduce plastic usage by 30%.**
- 2. Increase energy and water efficiency rates.**
- 3. Raise awareness of recycling among staff and guests.**
- 4. Initiate a feasibility study on the use of renewable energy sources, such as solar power.**

## 10. SUSTAINABILITY TEAM – DUTIES & RESPONSIBILITIES



## **11. TRANSPORTATION**

### **MEASURES AND RECOMMENDATIONS TO REDUCE THE USE OF FOSSIL FUEL VEHICLES**

#### **Purpose:**

**As Gülce Guesthouse, our aim is to reduce fossil fuel consumption and associated carbon emissions while strengthening environmental awareness regarding sustainable transportation among our guests, employees, and suppliers.**

#### **1. Measures and Recommendations for Guests**

- **Guests are informed about walking or cycling options from İnegöl city center to our guesthouse.**
- **Before arrival, information about public transportation and eco-friendly travel alternatives is provided.**
- **Warning signs in the parking area remind guests to switch off their engines; idling reduction is encouraged.**

#### **2. Measures and Practices for Employees**

- **Carpooling is encouraged among staff members, and shift schedules are organized accordingly.**
- **Employees living nearby are encouraged to walk or cycle to work.**
- **The use of electric scooters is planned to begin in 2026 as a sustainable transportation initiative.**

#### **3. Measures for Suppliers**

- **Delivery frequency is reduced by implementing weekly or biweekly bulk purchasing plans, which decreases both carbon emissions and traffic congestion.**

---

## **LOCAL PROCUREMENT AND LOGISTICS EFFICIENCY**

**Purpose:**

To minimize the carbon footprint in the supply chain, support the local economy, and promote sustainable logistics practices.

**Practices:**

- Local producers from İnegöl and nearby regions are prioritized in all procurement processes.
- Purchasing from local suppliers shortens transport distances, reducing fossil fuel usage.
- All orders follow bulk purchasing and route planning principles to lower shipment frequency and increase fuel efficiency.
- Eco-friendly packaging and transportation materials are preferred within the supply chain.

**Expected Outcomes:**

- Up to 10% annual reduction in fuel consumption
  - Strengthened economic cooperation with regional producers
  - Lower carbon emissions and improved logistics efficiency
- 

**13. WILDLIFE INTERACTION AND IMPACT POLICY****1. Purpose**

As Gülce Guesthouse, we aim to minimize the environmental and ecological impact of our operations, contribute to the protection of local ecosystems, and offer our guests an eco-conscious accommodation experience.

**2. Scope**

This policy covers all service areas, employees, suppliers, and guests of Gülce Guesthouse. It also includes urban wildlife elements in our surroundings, such as green spaces, parks, gardens, and local bird species.

**3. Core Principles**

- **Wildlife Protection:** We avoid activities that could harm urban wildlife such as birds, stray animals, and other living species.

- **Green Area Sensitivity:** During landscaping or garden maintenance, local plant species are preserved.
- **Waste Management:** We regularly separate waste, support recycling processes, and ensure no waste is left in nature.
- **Awareness:** Employees and guests are informed about the importance of urban biodiversity, and respectful behavior toward animals is encouraged.
- **Collaboration:** We value cooperation with local authorities and NGOs in projects that support urban wildlife protection.

#### **4. Implementation and Monitoring**

- The policy is coordinated by the Sustainability Officer.
- Environmentally friendly practices (such as noise control, waste separation, and energy saving) are regularly monitored.
- The effectiveness of the policy is reviewed annually and updated when necessary.

#### **5. Responsibility**

**All employees are required to comply with this policy.**

**Guests are also expected to support the environmental principles of our guesthouse.**

# Vehicle Fuel-Based CO<sub>2</sub> Emissions

Month	Monthly Gasoline Expense (₺)	Fuel Consumed (L)	Monthly CO <sub>2</sub> Emission (kg)
January	520	12.7	29.3
February	480	11.7	27.0
March	510	12.4	28.7
April	495	12.1	27.9
May	530	12.9	29.7
June	550	13.4	30.9
July	500	12.2	28.2
August	570	13.9	32.1
September	560	13.7	31.6
October	505	12.3	28.4
November	495	12.1	27.9
December	525	12.8	29.6

Annual Total CO<sub>2</sub> Emission:  $\approx 351.3$  kg CO<sub>2</sub>/year  $\approx 0.35$  tons CO<sub>2</sub>/year

---

## ENVIRONMENTAL PROTECTION AND WASTE MANAGEMENT POLICY

At Gülce Guesthouse, we are committed to protecting the environment, preventing pollution, and reducing any negative impacts our operations may have on nature.

To achieve this, we adhere to the following principles:

- **We comply with all legal environmental regulations and continuously work to minimize our ecological footprint.**
- **We ensure that waste is properly separated according to its source, type, and hazard classification.**
- **We recognize that using hazardous materials and chemicals only when necessary helps reduce both environmental impact and waste generation.**
- **We prioritize materials labeled as “recyclable” or “eco-friendly” to contribute to environmental preservation, and we strive to create reuse opportunities whenever possible.**
- **We use disposable materials such as paper, napkins, toilet paper, and packaging responsibly to minimize waste generation.**
- **We store waste in accordance with its type and ensure that it is handed over to licensed companies without exceeding legal storage time limits, maintaining proper documentation.**
- **We aim to conserve water, energy, and all natural resources, and we share this sensitivity with our employees, guests, and suppliers.**
- **We measure and monitor our environmental performance, evaluate results against our goals, and continually improve our practices.**
- **We aim to train our employees and raise their environmental awareness to promote a culture of responsibility and sustainability.**